

2013

TECHNICAL RESCUE SOLUTIONS







The Petzl story begins in caves. Fernand Petzl spent much of his life exploring passages deep underground. At the same time, he experimented with new vertical-progression techniques and equipment that would go on to revolutionize caving and allow him to break the world depth record in the 1950s. Over the years, Petzl adapted these tools and solutions for use in other vertical environments, both recreational and professional, all the while continuing to innovate.

Today, our product-development process remains true to a few simple core values: keeping close to and valuing our customers, developing innovative and practical approaches, and creating only the highest quality solutions.

It is in this spirit that we're working to meet the needs of technical rescue professionals. We have combined close collaboration with experts in the field of rescue with Petzl's know-how to create smart, reliable solutions allowing users to move with maximum efficiency and safety over high-angle and vertical terrain and in low-light environments.

In the pages that follow, there is extensive information on Petzl's many solutions for technical rescue, including the EXO personal escape system, developed in conjunction with the New York Fire Department, the I'D industrial descender, and the rugged PIXA line of professional-grade headlamps. Visit www.petzl.com for more information.



The **Petzl EXO Personal Escape System** provides firefighters with a fast, reliable means of escape from a burning structure when using a conventional exit is no longer possible.

A firefighter trained and equipped with the EXO system can quickly deploy the unique anchor and rope, then move rapidly towards an egress point and descend to a lower level.



The **I'D L** is specifically designed for handling rescue loads and allows rapid system conversion between hauling and lowering. For use with 11.5 - 13mm diameter kernmantle ropes.



The waterproof, crushproof, and versatile **PIXA** family of industrial headlamps are resistant to chemicals and ready for whatever task you require of them. Designed for the rigors of professional use, they will keep your hands free for the task at hand.

Table of contents

Helmets	Page 2
Harnesses	4
EXO	7
Descenders	8
Rope Grabs	10
Energy Absorbers	10
Connectors	11
Ropes	12
Bags & Gloves	12
Litters	13
Pulleys	14
Anchors	14
Lighting	16

Adaptability & Comfort

VERTEX and ALVEO helmets adapt to your lighting needs and additional protection requirements in a few seconds.

For lighting: each helmet has a front mounting slot for attachment of a PIXA headlamp, and four positioning hooks for mounting a headlamp with an elastic headband.

For protection: the user can install protective VIZIR or VIZEN face shields with the two lateral inserts, and can add hearing protection with the two lateral slots.



VERTEX helmets have a six-point webbing suspension system for maximum comfort on the head.



ALVEO helmets have an internal expanded polystyrene foam liner for reduced weight.



VERTEX® VENT

Comfortable ventilated helmet for work at height and rescue

- Six-point mesh liner conforms to the shape of the head for improved comfort
- Shock absorption achieved through deformation of the outer shell
- CenterFit adjustment system ensures centering and optimal stability of the helmet on the head
- Ventilation holes with sliding shutters allow the ventilation to be adjusted as needed from the outside
- Side slots for mounting hearing protection
- Inserts for accepting VIZIR or VIZEN face shields
- Slot for mounting a PIXA headlamp
- Four clips for mounting a headlamp with an elastic headband
- Chin strap designed to limit risk of losing helmet during a fall (strength greater than 50daN)
- Size: 53-63cm / 20.9 in - 24.8 in
- Weight: 455g / 16 oz
- Available in six colors:
 - VERTEX VENT (A10VYA): yellow
 - VERTEX VENT (A10VWA): white
 - VERTEX VENT (A10VRA): red
 - VERTEX VENT (A10VNA): black
 - VERTEX VENT (A10VOA): orange
 - VERTEX VENT (A10VBA): blue
- Certifications:
 - CE EN 12492*
 - UIAA
 - ANSI Z89.1-2009 Type I Class C

* Meets the requirements of the EN 397 and EN 12492 standards for protection against impact. Meets the optional requirements of the EN 397 standard for lateral deformation and use in low temperatures.

VERTEX BEST

Comfortable helmet for work at height and rescue

- Six-point mesh liner conforms to the shape of the head for improved comfort
- Shock absorption achieved through deformation of the outer shell
- CenterFit adjustment system ensures centering and optimal stability of the helmet on the head
- Side slots for mounting hearing protection
- Inserts for accepting VIZIR or VIZEN face shields
- Slot for mounting a PIXA headlamp
- Four clips for mounting a headlamp with an elastic headband
- Chin strap designed to limit risk of losing helmet during a fall (strength greater than 50daN)
- Unventilated shell protects against electrical hazards and molten metal splash
- Size: 53-63cm / 20.9 in - 24.8 in
- Weight: 455g / 16 oz
- Available in six colors:
 - VERTEX BEST (A10BY_): yellow
 - VERTEX BEST (A10BW_): white
 - VERTEX BEST (A10BR_): red
 - VERTEX BEST (A10BN_): black
 - VERTEX BEST (A10BO_): orange
 - VERTEX BEST (A10BB_): blue
- Certifications:
 - CE*
 - ANSI Z89.1-2009 Type I Class E:
 - A10BYA, A10BWA, A10BRA, A10BNA, A10BOA, A10BBA
 - CSA Z94.1-05 Type 1 Class E:
 - A10BYC, A10BWC, A10BRC, A10BCC, A10BNC, A10BOC

* Meets the requirements of the EN 397 and EN 12492 standards for protection against impact. Meets the requirements of the EN 397 and EN 50365 standards for electrical insulation. Meets the optional requirements of the EN 397 standard for molten metal splash, lateral deformation and use in low temperatures.



**NEW
2013**



TRANSPARENT STICKERS



REFLECTIVE STICKERS



ABSORBANT FOAM



REPLACEMENT FOAM

ALVEO VENT

Lightweight ventilated helmet for work at height & rescue

- Lightweight helmet with comfort foam that is barely felt on the head
- Shock is absorbed by deformation of the expanded polystyrene liner
- CenterFit adjustment system ensures centering and optimal stability of the helmet on the head
- Ventilation holes
- Side slots for mounting hearing protection
- Inserts for accepting VIZIR or VIZEN face shields
- Slot for mounting a PIXA headlamp
- Four clips for mounting a headlamp with an elastic headband
- Chin strap designed to limit risk of losing helmet during a fall (strength greater than 50daN)
- Size: 53-63cm / 20.9 in - 24.8 in
- Weight: 340g / 12 oz
- Available in three colors:
- ALVEO VENT (A20VYA): yellow
- ALVEO VENT (A20VWA): white
- ALVEO VENT (A20VRA): red
- Certifications:
 - CE EN 12492*
 - UIAA
 - ANSI Z89.1-2009 Type I Class C

* Meets the requirements of the EN 397 and EN 12492 standards for protection against impact. Meets the optional requirements of the EN 397 standard for lateral deformation and use in low temperatures.

ALVEO BEST

Lightweight helmet for work at height & rescue

- Lightweight helmet with comfort foam that is barely felt on the head
- Shock is absorbed by deformation of the expanded polystyrene liner
- CenterFit adjustment system ensures centering and optimal stability of the helmet on the head
- Side slots for mounting hearing protection
- Inserts for accepting VIZIR or VIZEN face shields
- Slot for mounting a PIXA headlamp
- Four clips for mounting a headlamp with an elastic headband
- Chin strap designed to limit risk of losing helmet during a fall (strength greater than 50daN)
- Unventilated shell protects against electrical hazards and molten metal splash
- Size: 53-63cm / 20.9 in - 24.8 in
- Weight: 345g / 12.2 oz
- Available in three colors:
 - ALVEO BEST (A20BYA): yellow
 - ALVEO BEST (A20BWA): white
 - ALVEO BEST (A20BRA): red
- Certifications:
 - CE*
 - ANSI Z89.1-2009 Type I Class E

* Meets the requirements of the EN 397 and EN 12492 standards for protection against impact. Meets the requirements of the EN 397 and EN 50365 standards for electrical insulation. Meets the optional requirements of the EN 397 standard for molten metal splash, lateral deformation and use in low temperatures.

VIZIR A15A

Protective face shield

- Easy to mount on VERTEX and ALVEO helmets with purpose-built inserts
- Two positions:
 - raised on top of helmet
 - lowered in working position
- Scratch- and fog-resistant
- Weight: 60g
- Certifications: CE EN 166, Class 1 Type B
 - ANSI Z87.1-2010

VIZEN A14

Eye shield with electrical protection

- Ultra-wrap shield completely protects face against dangers of an electric arc
- Mounting inserts for easy installation on VERTEX (latest version) and ALVEO helmets
- Pivots quickly from "work" position to "storage" position on top of the helmet
- Scratch- and fog-resistant
- Weight: 180g
- Certifications:
 - CE EN 166, 1BT8, EN 170, 2C-1,2
 - ANSI Z87.1-2010

Transparent stickers A10100

Sheet of 36 transparent stickers for personalizing VERTEX and ALVEO helmets

Reflective stickers

Sheet of four pre-cut reflective stickers for increased visibility

- For VERTEX (A10110) & ALVEO (A20110)

Absorbent foam

- Comfort foam absorbs perspiration
- Machine washable
- For VERTEX (A10200) & ALVEO (A20200)

Standard replacement foams

- Does not absorb perspiration
- Easy maintenance
- For VERTEX (A10210) & ALVEO (A20210)



NAVAHO® BOD

Work positioning and fall arrest harness

- Wide, semi-rigid waistbelt for excellent support
- Waistbelt and suspension seat lined with breathable perforated foam for maximum comfort when suspended
- Foam shoulder straps are widely spaced to reduce neck chafing and are linked to the directional ventral connector for easy donning
- Ventral attachment point distributes the weight more evenly between the waistbelt and the leg loops during suspended work
- Two lateral attachment points transfer the weight evenly around the waistbelt for comfort when leaning back in the belt (with support for the feet)
- Sternal and dorsal attachment points for connecting a fall arrest system
- Rear attachment point on the waistbelt for connecting a restraint lanyard
- Three equipment loops with protective sheath
- Slots for CARITOOL tool holder
- Waistbelt and shoulder straps equipped with self-locking DoubleBack buckles
- Available with leg loops equipped with self-locking DoubleBack buckles (C71000 B) or FAST automatic buckles (C710F0 B)
- NAVAHO BOD FAST is available in a black version (C710FN B)
- Weight: 1800 - 2000g
- Certifications:
 - CE EN 358
 - CE EN 361
 - CE EN 813
 - ANSI Z359 1 & 3 2007
 - NFPA 1983 CLASS III
 - CSA Z259.10-06 CLASS A, D, P



Thermoformed reinforcement panel at back of waistbelt gives excellent support for comfort while suspended. A restraint lanyard can be clipped to the rear buckle.



Three equipment loops: one on each side and one at the rear. Thin, rigid gear loops facilitate attaching carabiners.



There are many slots for tool holders on the waistbelt. CARITOOL tool holders can be attached as needed.

HARNES SIZING	
Size 1	27.6"-47.2" Waist 19.7"-25.6" Leg 5'3"-5'11" Stature
Size 2	31.5"-55.1" Waist 23.6"-29.5" Leg 5'9"-6'7" Stature

NEW
2013



AVAO® SIT

Work positioning seat harness

- Wide, semi-rigid waistbelt and leg loops give excellent support. They are contoured and lined with breathable perforated foam for maximum comfort when suspended
- Waistbelt equipped with self-locking DoubleBack buckles for quick and easy adjustment
- Ventral attachment point that distributes the load between the waistbelt and the leg loops
- Two lateral attachment points transfer the load to the waistbelt and can be flipped back against the waistbelt when snagging is an issue
- Rear attachment point allows connection of restraint lanyard or a TOP chest harness, transforming the harness into a fall arrest harness
- Five equipment loops with protective sheath
 - Slots for CARITOOL tool holder
 - Slots for TOOLBAG tool pouch
- Available in three versions:
 - AVAO SIT (C79AAA): leg loops equipped with self-locking DoubleBack buckles
 - AVAO SIT FAST (C79AFA): leg loops equipped with FAST automatic buckles
 - AVAO SIT (C79AAN): black, leg loops equipped with self-locking DoubleBack buckles
- Weight: 1125 - 1230g
- Certifications:
 - CE EN 358
 - CE EN 361
 - CE EN 813



NEW
2013

TOP CROLL



NEW
2013

TOP

TOP CROLL C81CAA

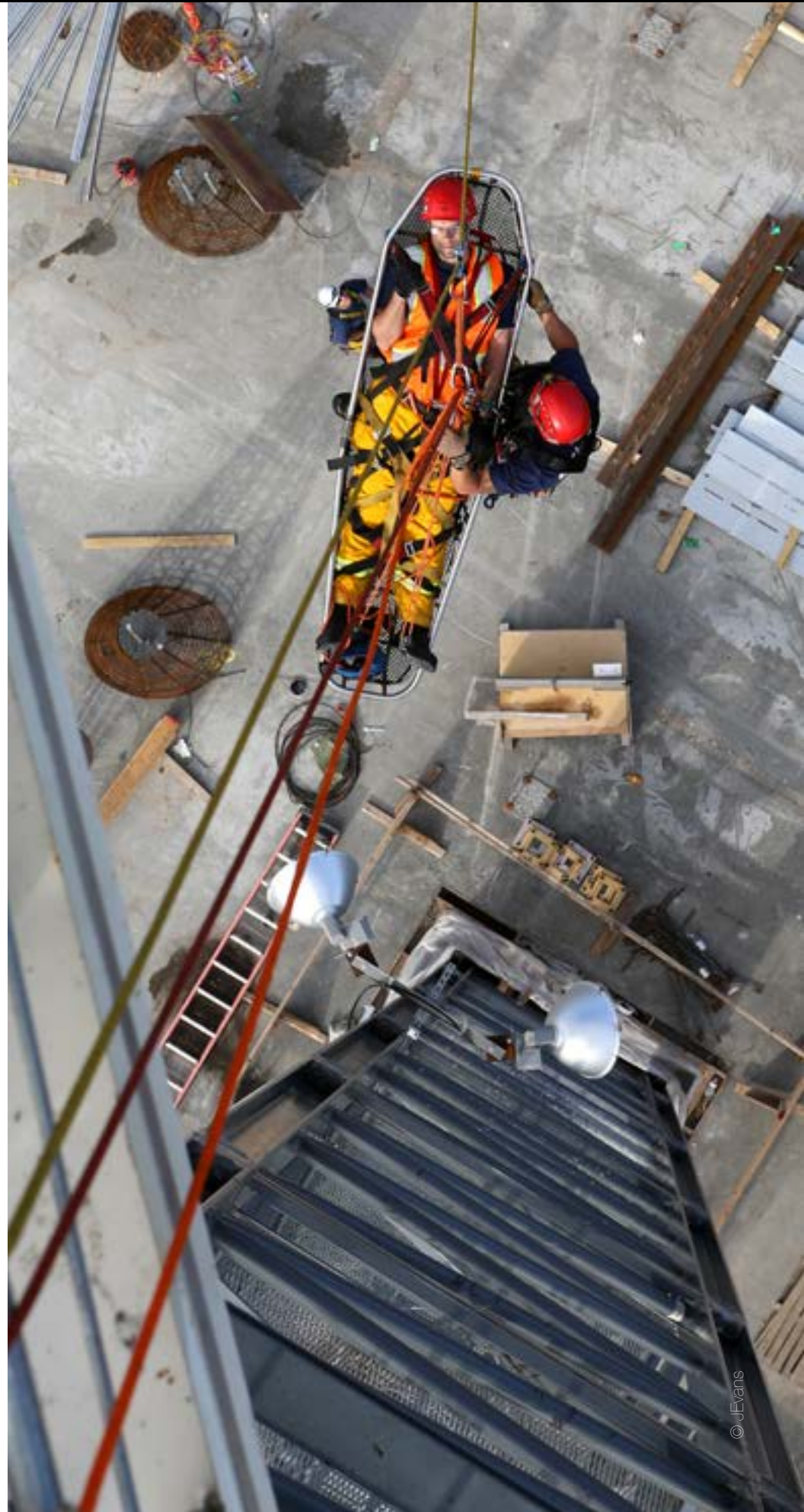
Chest harness with integrated CROLL

- Integrates a CROLL ventral rope clamp to transform the AVAO SIT, FALCON, FALCON ASCENT and SEQUOIA SRT harnesses into rope access harnesses
- Joins at the rear buckle and connects to the ventral attachment point with the DELTA directional connector
- Foam shoulder straps are widely spaced to reduce neck chafing. When the waistbelt is weighted, they help distribute the load over the shoulders
- Shoulder straps equipped with self-locking DoubleBack buckles for quick & easy adjustment
- Sternal attachment point for connecting a fall-arrest system
- Weight: 880g
- Certifications:
 - CE EN 358
 - CE EN 361
 - CE EN 813

TOP

Chest harness for seat harness

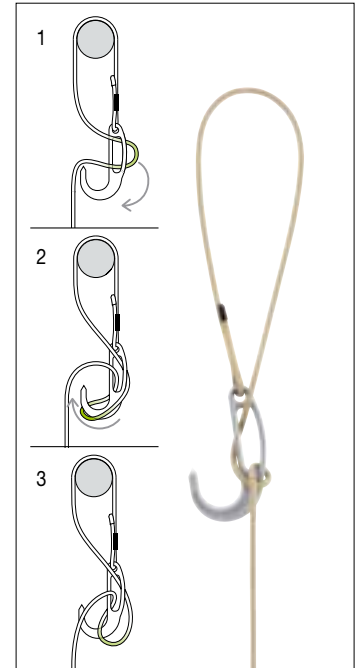
- Transforms the AVAO SIT, FALCON & SEQUOIA SRT seat harnesses into fall arrest harnesses
- Joins at the rear buckle and connects to the ventral attachment point
- Foam shoulder straps are widely spaced to reduce neck chafing
- Shoulder straps equipped with self-locking DoubleBack buckles for quick & easy adjustment
- Sternal attachment point for connecting a fall-arrest system
- Available in two versions:
 - TOP (C81AAA)
 - TOP (C81AAN): black
- Weight: 660g
- Certifications:
 - CE EN 358
 - CE EN 361
 - CE EN 813





EXO D30015 B1

Personal escape system with anchor hook adapted for locations where the possibility of finding an anchor point is uncertain



New hook design allows user to pass the hook end of the rope around a solid, stationary anchor and secure the connection by threading a loop of rope through the hitching slot and wrapping the hook.

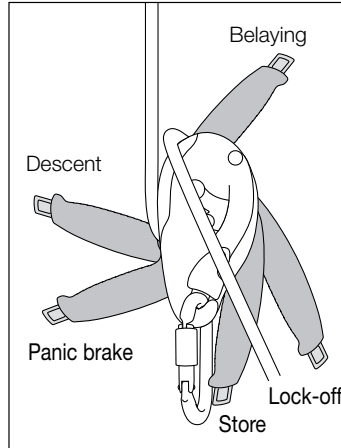


The static Technora (aramid fiber) rope is particularly resistant to abrasion and high temperatures.

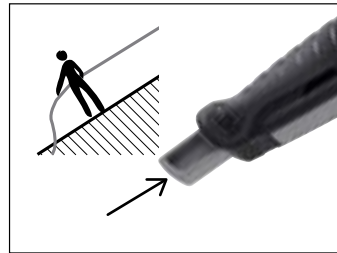
- Two ways to use the multi-purpose anchor hook:
 - around a structure, fixed with a locking hitch
 - on a window sill, as a last resort
- Technora (aramid fiber) 7.5mm diameter static rope
 - provides greater abrasion and heat resistance than nylon or polyester rope
- Self-braking descent control device:
 - facilitates controlling and stopping a descent
 - allows rapid horizontal movement
 - limits the force transmitted to the user in case of a shock load
- Nomex (aramid fiber) bag (S30AFF) for transporting and attaching the system directly to the harness (sold separately)
- Weight: 1700g (3.75 lb)
- Comes with 15m (50 ft) rope (other lengths available on special order)
- Certifications:
 - NFPA 1983 Escape Use

SPECIFIC PETZL TRAINING FOR THE EXO IS MANDATORY.

See www.petzl.com/exo for a list of authorized EXO trainers and dealers.



The I'D descender's multi-function handle allows the user to control the descent and to get into position at the work station. It also has an anti-panic function that is engaged if the user pulls too hard on the handle.



The button on the multi-function handle facilitates smooth movement along low-angle or horizontal terrain.



The anti-error catch reduces the risk of an accident due to incorrect installation of the rope in the device. A screw (that fits in the back of the device) allows the moving side-plate to be locked so that the I'D can be part of a tamper-resistant rescue kit.



I'D L

- **Self-braking descender with anti-panic function for rescue**
- Designed for rescue: lacks gated attachment hole
- Multi-functional handle allows the user to:
 - unblock the rope and control the descent with the hand on the free end of the rope
 - move more easily on horizontal or low-angle terrain thanks to the button on the handle
 - position himself while on the rope without tying off the device
- Anti-panic function is engaged if the user pulls too hard on the handle: the pivoting cam is released and automatically brakes to stop the descent
- Anti-error safety catch to reduce the risk of an accident due to incorrect installation of the device on the rope
- Shape of the cam is designed to improve rope glide when ascending
- Pivoting cam facilitates taking up the slack in the rope
- Can also be used to make a reversible haul system, and for short ascents (in conjunction with foot loop and ASCENSION handled rope clamp)
- For ropes between 11.5 and 13mm in diameter
- Available in two versions:
 - I'D L (D200L0): red
 - I'D L (D200LN): black
- Individually tested
- Weight: 530g
- Certifications:
 - CE EN 341 Class A
 - NFPA 1983 General Use

I'D S

Self-braking descender with anti-panic function

- Multi-functional handle allows the user to:
 - unblock the rope and control the descent with the hand on the free end of the rope
 - move more easily on horizontal or low-angle terrain thanks to the button on the handle
 - position themselves while on the rope without tying off the device
- Anti-panic function is engaged if the user pulls too hard on the handle: the pivoting cam is released and automatically brakes to stop the descent
- Anti-error safety catch to reduce the risk of an accident due to incorrect installation of the rope
- Shape of the cam is designed to improve rope glide when ascending
- Safety gate on the moving side plate helps prevent dropping the device and facilitates installation of the rope and passing intermediate anchors
- Pivoting cam facilitates taking up slack in the rope
- Can also be used to make a reversible haul system, and for short ascents (in conjunction with foot loop and ASCENSION handled rope clamp)
- A screw (into the back of the device) allows the moving side-plate to be locked so that the I'D S can be part of a rescue kit
- For ropes between 10 and 11.5mm in diameter
- Available in two versions:
 - I'D S (D200S0): yellow
 - I'D S (D200SN): black
- Individually tested
- Weight: 530g
- Certifications:
 - CE EN 341 Class A
 - CE EN 12841 type C
 - NFPA 1983 Technical Use



RIG

Compact self-braking descender

- Designed for rope access work (expert users only)
- Multi-functional handle allows the user to:
 - unblock the rope and control the descent with the hand on the free end of the rope
 - position themselves while on the rope without tying off the device
- Automatic return system on the handle limits risks in case of an involuntary action by the user
- Handle storage position reduces the risk of snagging when the descender is being carried on the harness
- Safety gate on the moving side plate helps prevent dropping the device and facilitates installation of the rope and passing intermediate anchors
- Pivoting cam facilitates taking up the slack in the rope
- Can also be used to make a reversible haul system, and for short ascents (in conjunction with foot loop and ASCENSION handled rope clamp)
- For single ropes between 10.5 and 11.5mm in diameter
- Available in two versions:
 - RIG (D21A): gold
 - RIG (D21AN): black
- Individually tested
- Weight: 380g
- Certifications:
 - CE EN 12841 type C
 - CE EN 341 class A
 - NFPA 1983, Technical Use





ASCENSION



ASAP



RESCUCENDER



BASIC

NEW
2013

ASCENSION

Handled ascender: right- and left-handed

- Designed for ascending and occasionally for hauling (progress capture)
- Wide, ergonomic molded handle allows a comfortable yet powerful grip
- Toothed cam with self-cleaning slot optimizes performance under any conditions (e.g. frozen or dirty ropes)
- Lower holes for connecting a lanyard and installing a foot loop with a quick link
- Upper connection hole for creating a pulley/rope clamp combination or for guiding the rope
- Left- and right-handed versions:
 - ASCENSION (B17WRA): right-handed, yellow
 - ASCENSION (B17WLA): left-handed, black
- For single ropes 8 to 13mm in diameter
- Weight: 195g
- Certifications:
 - CE EN 567
 - CE EN 12841 type B
 - NFPA 1983 Technical Use

RESCUCENDER B50

Cam-loaded rope clamp

- Removable axle can be used to install or remove the clamp at any point on the rope
- Locking pin: reduces the risk of undoing the system accidentally
- For single ropes between 9 and 13mm in diameter
- Weight: 250g
- Certifications:
 - CE EN 567

ASAP® B71

Mobile fall arrest device for rope

- Stops a fall, a slide or uncontrolled descent
- For use on a lifeline
- Locks even if the device is grabbed during a fall
- Works on vertical or angled rope
- Moves up and down along the rope without manual intervention
- Easy to install and remove at any point on the rope
- May be used with an ASAP'SORBBER or ABSORBICA energy absorber to create the desired distance from the safety line
- Comes with OK TRIACT-LOCK locking carabiner
- Weight: 425g (350g for ASAP & 75g for OK TRIACT-LOCK)
- Certifications:
 - CE EN 353 2 (fall arrest system): ASAP with a semi-static EN 1891 type A rope that is certified with the product (10.5 to 13mm diameter with sewn termination)
 - CE EN 12841 type A (difficult access): ASAP with any semi-static EN 1891 type A rope (10 to 13mm diameter)

BASIC B18BAA

Compact, versatile rope clamp

- Compact rope clamp for excellent grip
- Versatile: used to ascend a fixed rope, or as progress capture in a hauling system
- Toothed cam with self-cleaning slot optimizes performance under any conditions (e.g. rope that is icy, muddy, etc.)
- Stainless steel cam has better resistance to corrosion
- Wide lower hole allows lanyard and foot loop carabiners to be easily connected
- Upper hole for clipping a carabiner around the rope
- For single ropes between 8 & 11mm in diameter
- Weight: 85g
- Certifications:
 - CE EN 567
 - CE EN 12 841 type B



ASAP'SORBERS



ABSORBICA

ASAP'SORBBER

Energy absorbing integrated lanyard for ASAP

- Designed to connect the ASAP mobile fall arrester to a harness
- Energy generated from a fall is absorbed by the tearing of specific stitching
- Ends equipped with STRING to hold the connector in position and protect the webbing from abrasion
- Available in two lengths, to get the desired distance from the safety rope, to reach the best compromise between distance from the rope and height of the fall:
 - ASAP'SORBBER (L71 20): 20cm (required clearance: 3.15m, weight 60g)
 - ASAP'SORBBER (L71 40): 40cm (required clearance: 3.50m, weight 100g)
- Certifications:
 - CE EN 355

ABSORBICA L57

Tear webbing energy absorber

- Used with ASAP Fall Arrester for loads up to 200kg
- Used in combination with a JANE lanyard to set up an energy-absorbing lanyard with a maximum length of two meters
- Ends equipped with STRING to hold the connector in position and protect the webbing from abrasion
- Compact and lightweight



VULCAN TRIACT-LOCK



OXAN TRIACT-LOCK



VULCAN SCREW-LOCK



OXAN SCREW-LOCK

VULCAN

High-strength steel locking carabiner

- Steel adapted to difficult use conditions
- For use with heavy loads
- Large size allows easier connection of multiple elements
- Wide opening for connection to thick anchors
- Keylock system helps prevent snagging of the carabiner during maneuvers
- Red indicator provides a visual warning when the carabiner is unlocked (on SCREW-LOCK version)
- Two locking systems available:
 - VULCAN (**M73 SL**): SCREW-LOCK
 - VULCAN (**M73 TLA**): TRIACT-LOCK
- Major axis MBS: 40kN
- Minor axis MBS: 16kN
- Open gate MBS: 11kN
- Weight: 265g (**M73 SL**), 330g (**M73 TLA**)
- Certifications (**M73 SL**):
 - CE EN 362
 - NFPA 1983 General Use
- Certifications (**M73 TLA**):
 - CE EN 362
 - NFPA 1983 General Use
 - ANSI Z359.1
 - CSA Z259.12

OXAN

Steel symmetric locking carabiner

- Steel adapted to difficult use conditions
- Keylock system helps prevent snagging of the carabiner during maneuvers
- Red indicator provides a visual warning when the carabiner is unlocked (on SCREW-LOCK version)
- Two locking systems available:
 - OXAN (**M72 SL**): SCREW-LOCK
 - OXAN (**M72 TLA**): TRIACT-LOCK
- Major axis MBS: 27kN
- Minor axis MBS: 16kN
- Open gate MBS: 7kN
- Weight: 195g (**M72 SL**), 235g (**M72 TLA**)
- Certifications (**M72 SL**):
 - CE EN 362
 - NFPA 1983 Technical Use
- Certifications (**M72 TLA**):
 - CE EN 362
 - NFPA 1983 Technical Use
 - ANSI Z359.1
 - CSA Z259.12





VECTOR® 12.5

Static rope for fire rescue teams

- Fusion Process™ helps maintain the rope's shape and gives it excellent handling with nylon core and polyester sheath
- MBS : 9,000 lbf (40.1kN)
- Available in following lengths and colors:
 - 46m / 150 ft: white (R1246 W)
 - 46m / 150 ft: red (R1246 R)
 - 46m / 150 ft: blue (R1246 B)
 - 46m / 150 ft: yellow (R1246 Y)
 - 46m / 150 ft: orange (R1246 O)
 - 61m / 200 ft: white (R1261 W)
 - 61m / 200 ft: red (R1261 R)
 - 61m / 200 ft: blue (R1261 B)
 - 61m / 200 ft: yellow (R1261 Y)
 - 61m / 200 ft: orange (R1261 O)
 - 183m / 600 ft: white (R12183 W)
 - 183m / 600 ft: red (R12183 R)
 - 183m / 600 ft: blue (R12183 B)
 - 183m / 600 ft: yellow (R12183 Y)
 - 183m / 600 ft: orange (R12183 O)
 - 183m / 600 ft: black (R12183 N)
 - 366m / 1200 ft: white (R12366 W)
 - 366m / 1200 ft: black (R12366 N)
- Weight: 7.7 lb/100 ft
- Certifications:
 - NFPA 1983 General Use

VECTOR® 11

Static rope designed for difficult to access environments and for fall protection

- Fusion Process™ helps maintain the rope's shape and gives it excellent handling with nylon core and polyester sheath
- MBS : 7,000 lbf (31.2kN)
- Available in following lengths and colors:
 - 46m / 150 ft: white (R1146 W)
 - 46m / 150 ft: red (R1146 R)
 - 46m / 150 ft: blue (R1146 B)
 - 46m / 150 ft: black (R1146 N)
 - 61m / 200 ft: white (R1161 W)
 - 61m / 200 ft: red (R1161 R)
 - 61m / 200 ft: blue (R1161 B)
 - 61m / 200 ft: black (R1161 N)
 - 183m / 600 ft: white (R11183 W)
 - 183m / 600 ft: red (R11183 R)
 - 183m / 600 ft: blue (R11183 B)
 - 183m / 600 ft: black (R11183 N)
 - 200m / 656 ft: white (R11200 W)
 - 200m / 656 ft: black (R11200 N)
 - 366m / 1200 ft: white (R11366 W)
 - 366m / 1200 ft: black (R11366 N)
- Weight: 6 lb/100 ft
- Certifications:
 - NFPA 1983 Technical Use

RESCUE CORD

8mm static rope designed primarily for tying Prusik hitches on VECTOR 11mm & VECTOR 12.5mm ropes

- Excellent performance when belaying with the Tandem Prusik technique
- Available in following lengths and colors:
 - 46m / 150 ft: red (R846 R)
 - 46m / 150 ft: orange (R846 O)
 - 46m / 150 ft: green (R846 G)
 - 46m / 150 ft: black (R846 N)
 - 92m / 300 ft: red (R892 R)
 - 92m / 300 ft: orange (R892 O)
 - 92m / 300 ft: green (R892 G)
 - 92m / 300 ft: black (R892 N)
- Weight: 3.3 lb/100 ft
- Certifications:
 - NFPA 1983 Escape Use



STANDARD ROPE BAG



ROPE BUCKET

STANDARD ROPE BAG

Heavy-duty handled rope bag

- Ergonomic handled bag that will hold up to 200 feet of ½" rope
- Single shoulder strap and rope log window
- Available in following colors:
 - Blue (R40 B)
 - Black (R40 N)
 - Orange (R40 O)
 - Yellow (R40 Y)
 - Red (R40 R)
- Weight: 400g

ROPE BUCKET

Foam-lined rope bag

- A sturdy bag for up to 200 ft of ½" rope or 600 ft of 11mm rope (XL size)
- Foam lining keeps bag open for easy deployment & stuffing
- Available in following colors and sizes:
 - Standard:
 - Blue (R41 B)
 - Black (R41 N)
 - Orange (R41 O)
 - Yellow (R41 Y)
 - Red (R41 R)
 - X-Large:
 - Black (R41XL N)
 - Orange (R41XL O)
 - Red (R41XL R)
- Weight:
 - 500g (standard)
 - 1181g (XL)



BUCKET



TRANSPORT

BUCKET

Fabric pack, remains upright

- Exterior folding lid system that allows easy access to the contents of the bag
- External zippered pocket for personal effects
- Transparent external window for displaying an equipment identification card
- Interior attachment ring for rope
- Bottom is lined for longer wear
- Waterproof fabric
- Available in two versions:
 - BUCKET 25 liters (S41Y 025): 525g
 - BUCKET 35 liters (S41Y 025): 630g

TRANSPORT S42Y 045

Durable large-capacity bag

- Waistbelt, shoulder straps and back panel are padded for comfort
- Upper flap with inside identification card pocket
- Welded construction for greater strength (PVC free)
- Cordlock closure easy to manipulate, designed for difficult environments
- Side and top handles for carrying by hand
- Upper loop for hauling
- Inside loop for suspending pack in open position
- Capacity: 45 liters
- Weight: 1250g



CORDEX PLUS BLACK



CORDEX PLUS TAN



CORDEX BLACK



CORDEX TAN

CORDEX PLUS

Rigging and rappel gloves

- Durable double layer of natural, high quality leather in high-wear areas (fingertips, palm, between thumb and index finger)
- Back is made of durable leather with abrasion-resistant stretch nylon at key flex areas
- Neoprene cuff with Velcro® closure
- Carabiner hole to attach gloves to harness
- Sizes in Black:
 - Small (K52 SN), Medium (K52 MN), Large (K52 LN), XL (K52 XLN)
- Sizes in Tan:
 - XS (K52 XST), Small (K52 ST), Medium (K52 MT), Large (K52 LT), XL (K52 XLT)
- Weight: 150g
- Certifications:
 - CE EN 420
 - CE EN 388, 4143

CORDEX

Lightweight belay/rappel gloves

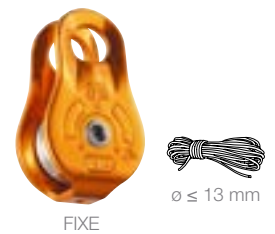
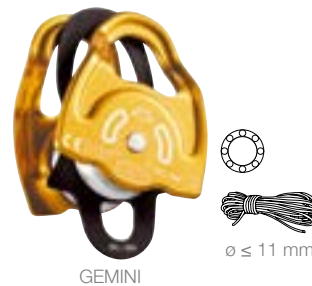
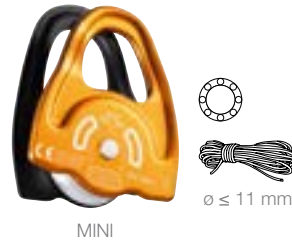
- Natural, high-quality leather
- Durable double layer of leather in high-wear areas (fingertips, palm, between thumb and index finger)
- Back made of breathable stretch nylon
- Neoprene cuff with Velcro® closure
- Carabiner hole to attach gloves to harness
- Sizes in Black:
 - Small (K53 SN), Medium (K53 MN), Large (K53 LN), XL (K53 XLN)
- Sizes in Tan:
 - XS (K53 XST), Small (K53 ST), Medium (K53 MT), Large (K53 LT), XL (K53 XLT)
- Weight: 140g
- Certifications:
 - CE EN 420
 - CE EN 388, 4142



NEST S61

Litter for confined spaces

- Allows the victim to be transported horizontally, vertically or at an angle, to adapt to irregular or narrow terrain
- Litter has a complete body harness integrated in it to secure the victim. Color coded to avoid any installation error
- Self-locking DoubleBack buckles for quick and easy strap adjustment
- Smooth, rigid plastic bottom ensures good sliding
- Foam padding provides comfort for the victim's back
- Rigid stays can be removed to reduce bulk when accessing accident site
- Optional accessory: STEF inclination device allows the litter to be easily tilted according to the terrain
- Weight: 12.8 kg
- Dimensions: 200 x 50 x 5cm



RESCUE

High strength, high efficiency pulley

- For rescue professionals
- Designed to maneuver heavy loads or for intensive use
- 38mm aluminum sheave mounted on sealed ball bearings for excellent efficiency (95%)
- Accepts up to three carabiners to facilitate use
- Safe working load: 8kN (4kN on one rope end)
- MBS: 36kN
- Available in two colors:
 - Red (P50A)
 - Black (P50AN)
- Weight: 185g
- Certifications:
 - CE EN 12278
 - NFPA 1983 General Use

KOOTENAY P67

Knot-passing pulley

- Voluminous rope channel allows the passage of joining knots (76mm) (lifting loads over great distances or moving along a Tyrolean traverse with two ropes)
- Large diameter sheave mounted on sealed ball bearings for excellent efficiency
- Locking pins on the sheave allow use of the pulley as an anchor
- For use with ropes from 8 to 19mm
- Safe working load: 10kN
- MBS: 40kN
- Weight: 1390g
- Height: 260mm
- Certifications:
 - CE EN12278

MINDER P60A

High strength, high efficiency Prusik pulley

- Special side plates designed for use with a Prusik friction hitch in progress capture systems
- 2" tread diameter aluminum sheave mounted on sealed ball bearings for excellent efficiency (97%)
- Accepts up to three carabiners to facilitate use
- Safe working load: 8kN (4kN on one rope end)
- MBS: 36kN
- Weight: 295g
- Certifications:
 - CE EN 12278
 - NFPA 1983 General Use

TWIN P65A

High strength, high efficiency double Prusik pulley

- Special side plates designed for use with a Prusik friction hitch in progress capture systems
- Parallel mounted sheaves and auxiliary attachment point for creating different types of simple & complex hauling systems
- 2" tread diameter aluminum sheave mounted on sealed ball bearings for excellent efficiency (97%)
- Accepts up to three carabiners to facilitate use
- Safe working load: 12kN (3kN on one rope end)
- MBS: 36kN
- Weight: 450g
- Certifications:
 - CE EN 12278
 - NFPA 1983 General Use

MINI P59A

Highly efficient and lightweight Prusik pulley

- Special side plates designed for use with a Prusik friction hitch in progress capture systems
- 1" tread diameter aluminum sheave mounted on sealed ball bearings for excellent efficiency (91%)
- Compact and lightweight
- Safe working load: 5kN (2.5kN on one rope end)
- MBS: 23kN
- Weight: 80g
- Certifications:
 - CE EN 12278
 - NFPA 1983 Technical Use

GEMINI P66A

Highly efficient and lightweight double Prusik pulley

- Special side plates designed for use with a Prusik friction hitch in progress capture systems
- Parallel mounted sheaves and auxiliary attachment point for creating different types of hauling systems
- 1" tread diameter aluminum sheave mounted on sealed ball bearings for excellent efficiency (91%)
- Compact and lightweight
- Safe working load: 6kN (1.5kN on one rope end)
- MBS: 23kN
- Weight: 135g
- Certifications:
 - CE EN 12278
 - NFPA 1983 Technical Use

PARTNER P52A

Highly efficient ultra-compact pulley

- Extremely lightweight & ultra-compact pulley
- Designed for daily tasks and for on-site rescue (Tyrolean traverse, etc.)
- 1" tread diameter aluminum sheave mounted on sealed ball bearings for excellent efficiency (91%)
- Safe working load: 5kN (2.5kN on one rope end)
- MBS: 15kN
- Weight: 56g
- Certifications:
 - CE EN 12278

FIXE

Versatile compact pulley

- Fixed side plates allow quick installation and coupling with a rope clamp
- Designed for hauling systems and deviations
- 21mm sheave sheave mounted on self-lubricating bushings for efficiency (71%)
- For use with OK or WILLIAM type carabiner
- Safe working load: 5kN
- MBS: 23kN
- Available in two colors:
 - Gold (P05W)
 - Black (P05WN)
- Weight: 90g
- Certifications:
 - CE EN 12278



PRO TRAXION

$8 \leq \varnothing \leq 13\text{mm}$



MICRO TRAXION

$8 \leq \varnothing \leq 11\text{mm}$

PRO TRAXION P51

Very efficient progress capture pulley

- Pulley with integrated progress capture device can be used as a pulley or rope clamp:
 - Trigger cam with teeth and cleaning slot works even on dirty or icy ropes
 - Ergonomic spring-loaded catch is easy to manipulate, even with gloves
 - Spring-loaded catch can be locked in open position for use as a simple pulley
- Large diameter aluminum sheave mounted on sealed ball bearings for excellent efficiency
- Lockable moving side plate makes it possible to install the rope easily even if the pulley is already attached to the anchor
- Auxiliary attachment point for locking the pulley and creating different types of hauling systems
- For use with OK or WILLIAM type carabiner
- Safe working load: 6kN (3kN on one rope end)
 - 2.5kN on rope clamp
- Weight: 265g
- Certifications:
 - CE EN 567
 - CE EN 12278

MICRO TRAXION P53

Compact, lightweight progress capture pulley

- Pulley with integrated progress capture device can be used as a pulley or rope clamp:
 - Toothed cam with cleaning slot works even on dirty or icy ropes
 - Ergonomic spring-loaded catch is easy to manipulate, even with gloves
 - Spring-loaded catch can be locked in open position for use as a simple pulley
- Lightweight & compact, ideal for work & rescue kits
- Aluminum sheave mounted on self-lubricating bushing
- For use with OK or WILLIAM type carabiner
- Safe working load: 5kN (2.5kN on one rope end)
 - 2.5kN on rope clamp
- Weight: 85g
- Certifications:
 - CE EN 567



PAW S



PAW M



PAW L



SWIVEL LARGE

PAW

Rigging plate

- For easy organization of the work area and for creating multiple anchor systems
- 19mm holes allow the locking sleeves of most carabiners to pass through
- Made of aluminum: excellent strength-to-weight ratio
- Breaking strength: 36kN
- Available in three sizes:
 - PAW S (**P63 S**): small (weight: 55g)
 - PAW M (**P63 M**): medium (weight: 210g)
 - PAW L (**P63 L**): large (weight: 350g)
- Certifications:
 - CE EN 0197
 - NFPA 1983 General Use

SWIVEL P58 L

Swivel

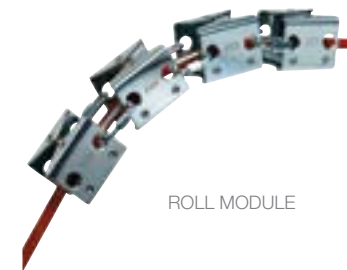
- Prevents the rope from twisting when the load is turning
- Excellent performance and reliability due to maintenance-free sealed ball-bearings
- Designed for two-person loads, up to three connectors can be attached to the ends
- Breaking strength: 36 kN
- Weight: 150g
- Certifications:
 - CE
 - NFPA 1983 General Use



PROTEC



SET CATERPILLAR



ROLL MODULE

PROTEC C45 N

Flexible protection

- To help protect a fixed rope from abrasion
- Rugged, lightweight sheath (without PVC)
- Velcro closure and clip for easy & quick installation
- Weight: 95g

SET CATERPILLAR P68

Articulated protector

- To help protect a moving rope from abrasion
- Modules are connected with quick links: the number of modules can be varied according to the terrain
- Each module can be positioned independently to adapt to the terrain
- Sold as a kit: 4 modules + 6 quick links
- Weight: 1055g

ROLL MODULE P49

Articulated protector with rollers

- To guide a moving rope and protect it from abrasion
- Vertical and horizontal rollers guide the moving rope with a minimum of rubbing
- Each module can be positioned independently to adapt to the terrain
- Modules are connected with quick links: the number of modules can be varied according to the terrain
- Sold as a kit: 4 modules + 6 quick links + carry bag
- Weight: 1330g



PIXA 3R E78CHR

Rechargeable multibeam headlamp with configurable performance

- May be worn on the head with the headband, attached to a helmet with the included mount, or placed on the ground
- Rechargeable Lithium-Ion Polymer battery plugs into a quick charging (3 hours) dock for frequent use
- Three possible configurations to adapt lighting performance to needs:
 - STANDARD: power / battery life balance
 - MAX AUTONOMY: battery life prioritized (12 hours)
 - MAX POWER: power prioritized (55 lumens)
- Three lighting modes:
 - a mode adapted for close-range work: wide, uniform beam
 - a mode adapted for movement: mixed beam with focused component allows user to move around comfortably
 - a mode adapted for long-range vision: highly focused beam
- Constant lighting, guaranteed lighting performance that does not diminish during its entire lifetime
- Switches to reserve lighting when rechargeable battery is almost discharged: lights to 5 lumens minimum for 2 hours
- Rotating selector knob is easy to use, even with gloves
- Rugged:
 - excellent resistance to falls (2 meters), to impacts and to crushing (80 kg)
 - storage position protects the lens and keeps headlamp from being turned on accidentally
- Comfortable adjustable headband, easily detached for washing
- Flashing battery charge indicator and red light
- Watertightness: IP 67, waterproof to -1 meter for 30 minutes, no maintenance required after immersion
- Chemical resistance: (see www.petzl.com/PIXA)
- Weight: 145g
- Guarantee: headlamp 3 years, rechargeable battery 1 year
- Certifications:
 - CE
 - ATEX: Zone 2/22
 - ANSI/NEMA FL1



PIXA 3 E78CHB

Multi-beam headlamp adapted for close-range work, for moving around and for long-range vision

- Headlamp keeps the hands free for work: may be worn on the head with the headband, attached to a helmet with the included mount, or placed on the ground
- Three lighting modes:
 - a mode adapted for close-range work: wide, uniform beam
 - a mode adapted for movement: mixed beam with focused component allows user to move around comfortably
 - a mode adapted for long-range vision: highly focused beam
- Constant lighting, guaranteed lighting performance that does not diminish during its entire lifetime
- Switches to reserve lighting when batteries are almost discharged (lights to 5 lumens for a minimum of 10 hours)
- Rotating selector knob is easy to use, even with gloves
- Rugged:
 - excellent resistance to falls (2 meters), to impacts and to crushing (80 kg)
 - storage position protects the lens and keeps headlamp from being turned on accidentally
- Comfortable adjustable headband, easily detached for washing
- Battery charge indicator: repetitive flasher & red light
- Waterproof to -1 meter for 30 minutes (IP 67), no maintenance required after immersion
- Resistant to chemicals (see www.petzl.com)
- Works with two AA/LR6 batteries (included), compatible with alkaline batteries, or with rechargeable Ni-MH batteries, or with lithium batteries which allow the burn time to be doubled with identical lighting performance
- Weight (with batteries): 160g
- 3-year guarantee
- Certifications:
 - CE
 - ATEX: CE0080, Ex II 3 GD, Ex nAnL IIB T4
 - HAZLOC: class I Groups C & D div II, Class II Group G div II
 - Certifications guaranteed only with alkaline batteries
 - ANSI/NEMA FL1



PIXA 2 E78BHB

Headlamp with mixed beam, designed for close-range work and for movement

- Headlamp keeps the hands free for work: may be worn on the head with the headband, attached to a helmet with the included mount, or placed on the ground
- Two lighting modes:
 - a mode adapted for close-range work: mixed beam provides a wide, uniform base
 - a mode adapted for movement: mixed beam with focused component at the top of the beam allows user to move around comfortably
- Constant lighting, guaranteed lighting performance that does not diminish during its entire lifetime
- Switches to reserve lighting when batteries are almost discharged (lights to 5 lumens for a minimum of 10 hours)
- Rotating selector knob is easy to use, even with gloves
- Rugged:
 - excellent resistance to falls (2 meters), to impacts and to crushing (80 kg)
 - storage position protects the lens and keeps headlamp from being turned on accidentally
- Comfortable adjustable headband, easily detached for washing
- Battery charge indicator flashes repetitively
- Waterproof to -1 meter for 30 minutes (IP 67), no maintenance required after immersion
- Resistant to chemicals (see www.petzl.com)
- Works with two AA/LR6 batteries (included), compatible with alkaline batteries, or with rechargeable Ni-MH batteries, or with lithium batteries which allow the burn time to be doubled with identical lighting performance
- Weight (with batteries): 160g
- 3-year guarantee
- Certifications:
 - CE
 - ATEX: CE0080, Ex II 3 GD, Ex nAnL IIB T4
 - HAZLOC: class I Groups C & D div II, Class II Group G div II
 - Certifications guaranteed only with alkaline batteries
 - ANSI/NEMA FL 1



PIXA 1 E78AHB

Headlamp with wide, uniform beam, designed for close-range work

- Headlamp keeps the hands free for work: may be worn on the head with the headband, attached to a helmet with the included mount, or placed on the ground
- Ideal lighting mode for all close-range work: wide, uniform beam
- Constant lighting: guaranteed lighting performance that does not diminish during the entire rated battery life
- Switches to reserve lighting when batteries are almost discharged (lights to 5 lumens for a minimum of 10 hours)
- Rotating selector knob is easy to use, even with gloves
- Rugged:
 - excellent resistance to falls (2 meters), to impacts and to crushing (80 kg)
 - storage position protects the lens and keeps headlamp from being turned on accidentally
- Comfortable adjustable headband, easily detached for washing
- Waterproof to -1 meter for 30 minutes (IP 67), no maintenance required after immersion
- Resistant to chemicals (see www.petzl.com)
- Works with two AA/LR6 batteries (included), compatible with alkaline batteries, or with rechargeable Ni-MH batteries, or with lithium batteries which allow the burn time to be doubled with identical lighting performance
- Weight (with batteries): 160g
- 3-year guarantee
- Certifications:
 - CE
 - ATEX: CE0080, Ex II 3 GD, Ex nAnL IIB T4
 - HAZLOC: class I Groups C & D div II, Class II Group G div II
 - Certifications guaranteed only with alkaline batteries
 - ANSI/NEMA FL 1





Z79 FRB

To find a dealer located near you go to:
www.petzl.com/us/pro/dealer-locator

Cover: © JEvans

Distributed by:

